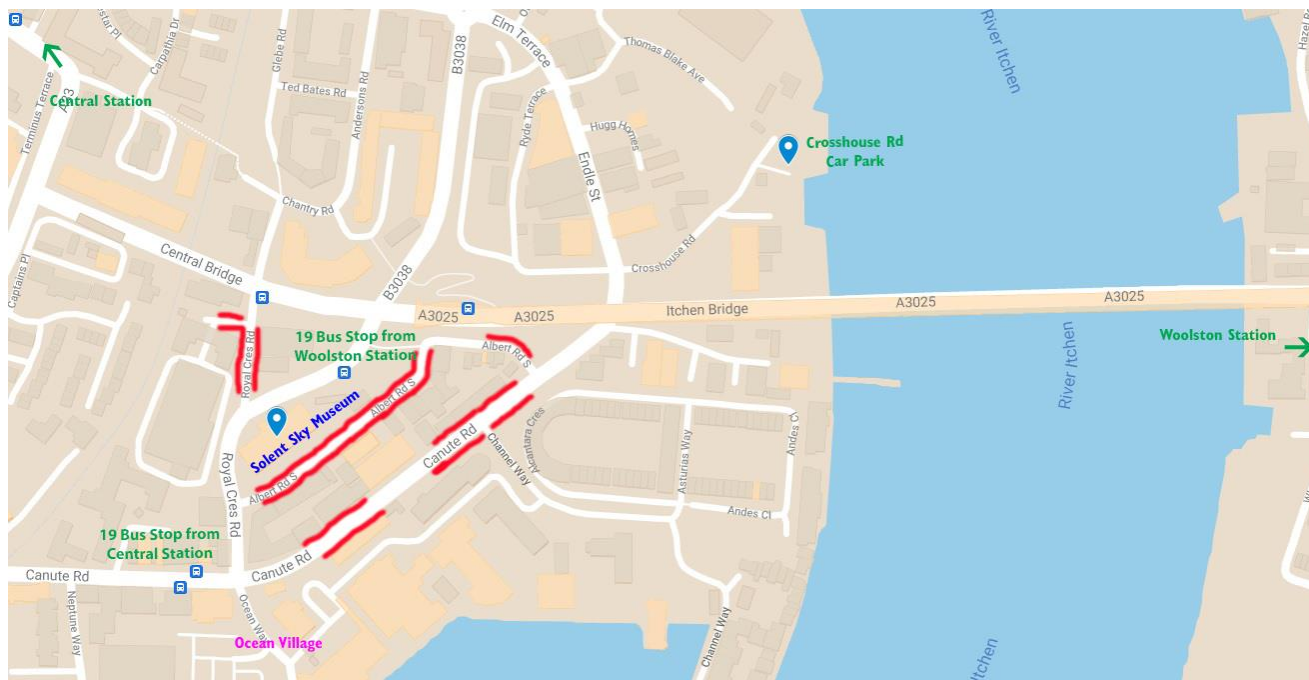


Travel to Solent Sky Museum

Museum address - Albert Rd S, Southampton SO14 3FR



Travel by train

If you are coming by train to Southampton Central, then it is a 30 minute walk to the Museum, or catch Bluestar bus 19 from the station to Ocean Village stop (marked on map), then walk to the junction and turn left into Royal Crescent Road. Albert Road and the museum is then on the right. The entrance to the museum is on the end nearest to you.

If coming by train to Woolston, then it is a 7 minute walk over the Itchen Bridge, or catch the Bluestar bus 19 to the other end of the Itchen Bridge - the Museum is then on your left.

The museum is very noticeable as it has a big red lightship alongside it. The entrance to the museum faces Royal Crescent Road.

Travel by car

From East. Via the Itchen toll bridge, when you get to the traffic lights at the end of the bridge, turn left, then the museum is on your left.

From M27 junction 8. Follow signs for Southampton A3024. Continue along this road (you will also see brown signs for St Mary's Stadium) until you have crossed Northam Bridge, then continue to follow the brown football signs and turn left to go past the stadium. Follow the road over a number of mini roundabouts until you reach the traffic lights. To your left is the Itchen bridge, but go straight across the lights towards Ocean Village, Docks & Waterfront. The museum is on your left.

From M27 junction 7. Follow signs for Southampton A334, then at the major junction, turn right onto the A3024 and follow the directions above.

From M27 junction 3. Take M271 South towards Southampton. At the end of the M271 take the first exit at the roundabout, signposted Southampton The Docks and by a brown sign to West Quay. Continue to follow signs for City Centre and brown signs for West Quay. Where the road splits, take the right hand lanes on the A33 to Dock Gates 4-10 and West Quay. Follow the road past LKEA on your left. At the roundabout take the 2nd exit to Fareham, Portsmouth, still following the A33. Keep to the right hand lane to continue towards Fareham, Portsmouth A3024. Go over the level crossing and then at the second set of traffic lights turn left. The Museum is then 100 yards on your right.

The entrance to the Museum is at the end of the building on Royal Park Crescent Road.

There is no parking onsite, but there is on-street parking for around 140 cars on the roads around the museum, Albert Rd S, Canute Rd and Royal Crescent Road – marked in red on the map.

Parking charges apply Monday – Saturday 8 am – 8 pm, Sunday 1-6 pm

Charged as follows:

Day time (08:00 – 18:00 Mon to Sat, 13:00 – 18:00 Sun) Up to 1 hour - £1.00, Up to 2 hours £2.50, Up to 4 hours - £4.70, Up to 10 hours - £5.50.

Evening charge Mon – Sat (18:00 – 20:00) – 50p per 30 minutes.

No evening charge Sunday

In addition, there is off street parking in the Crosshouse Road car park which is approx. 5 minutes walk away.

There are 66 spaces in this car park. At least one section of the car park says no trailers.

Parking charges apply Monday – Saturday 8 am – 6 pm, Sunday 12 - 6 pm

Charged as follows: Up to 2 hours - £1.40, Up to 4 hours £2.60, Over 4 hours - £4.20

You can pay for parking by coin, card or phone using apple pay etc or using the paybyphone app.