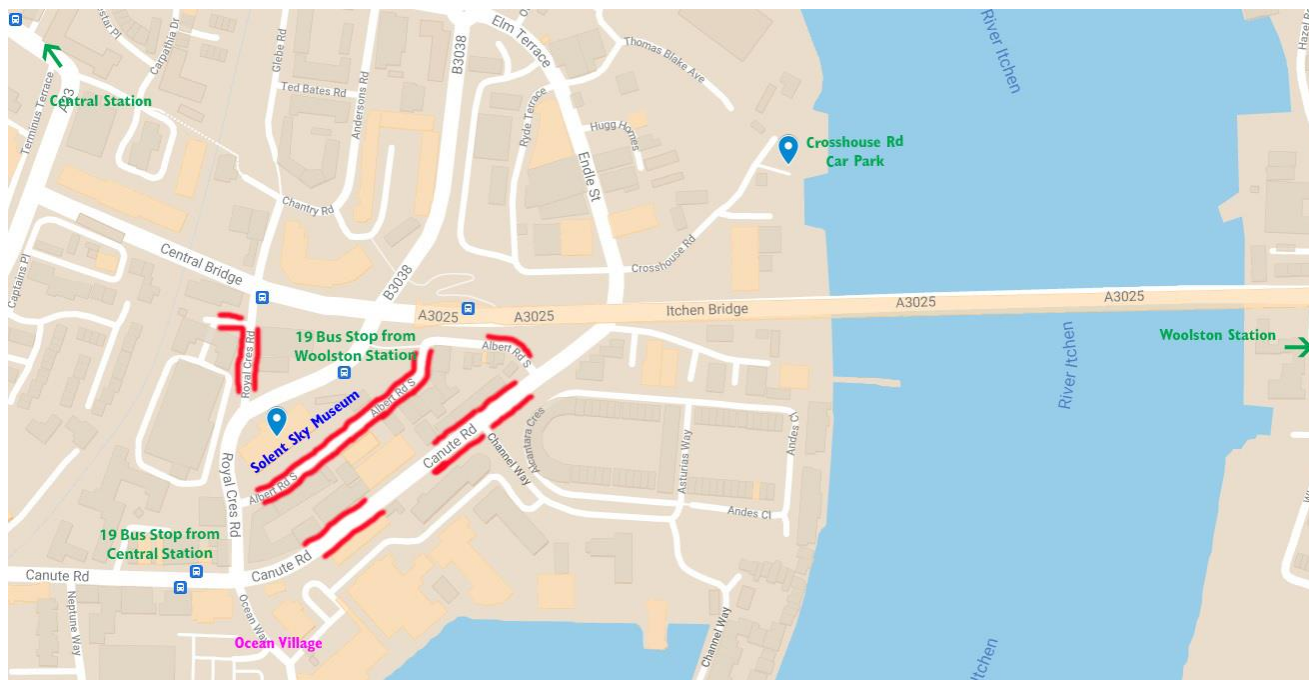


Travel to Solent Sky Museum

Museum address - Albert Rd S, Southampton SO14 3FR



Travel by train

If you are coming by train to Southampton Central, then it is a 30 minute walk to the Museum, or catch Bluestar bus 19 from the station to Ocean Village stop (marked on map), then walk to the junction and turn left into Royal Crescent Road. Albert Road and the museum is then on the right. The entrance to the museum is on the end nearest to you.

If coming by train to Woolston, then it is a 7 minute walk over the Itchen Bridge, or catch the Bluestar bus 19 to the other end of the Itchen Bridge - the Museum is then on your left.

The museum is very noticeable as it has a big red lightship alongside it. The entrance to the museum faces Royal Crescent Road.

Travel by car

There is no parking onsite, but there is on-street parking for around 140 cars on the roads around the museum, Albert Rd S, Canute Rd and Royal Crescent Road – marked in red on the map.

Parking charges apply Monday – Saturday 8 am – 8 pm, Sunday 1-6 pm

Charged as follows:

Day time (08:00 – 18:00 Mon to Sat, 13:00 – 18:00 Sun) Up to 1 hour - £1.00, Up to 2 hours £2.50, Up to 4 hours - £4.70, Up to 10 hours - £5.50.

Evening charge Mon – Sat (18:00 – 20:00) – 50p per 30 minutes.

No evening charge Sunday

In addition, there is off street parking in the Crosshouse Road car park which is approx. 5 minutes walk away.

There are 66 spaces in this car park. At least one section of the car park says no trailers.

Parking charges apply Woolston – Saturday 8 am – 6 pm, Sunday 12 - 6 pm

Charged as follows: Up to 2 hours - £1.40, Up to 4 hours £2.60, Over 4 hours - £4.20

You can pay for parking by coin, card or phone using apple pay etc or using the paybyphone app.